



broker *Becker*

Contact | Call for a Tour: Jeff Becker 805.653-6794 ext. 201 | jbecker@beckergroup.com
or Matt Kingsley 805.653-6794 ext. 214 | mkingsley@beckergroup.com

Downtown Ventura Industrial Building with Yard



188 West Santa Clara Street Ventura • California

Real Estate Investments | Property Management
Real Estate Investments | Property Management

Office Address | 40 South Ash Street Ventura, CA 93001 Mailing Address | Post Office Box 23277, Ventura, CA 93002
Telephone | 805.653.6794 Facsimile | 805.653.6795 License | 01213236 Web | www.beckergroup.com

The information above has been obtained from sources believed reliable. While we do not doubt its accuracy, we have not verified it and make no guarantee, warranty or representation about it. It is your responsibility to independently confirm its accuracy and completeness. Any projections, opinions, assumption or estimates used are for example only and do not represent the current or future performance of the property. The value of this transaction to you depends on tax and other factors which should be evaluated by your tax, financial and legal advisors. You and your advisors should conduct a careful independent investigation of the property to determine to your satisfaction the stability of the property for your needs.



Industrial Building w/Yard

For LEASE

Contact: Jeff Becker 805.653-6794 ext. 201 | jbecker@beckergroup.com
or Matt Kingsley 805.653-6794 ext. 214 | mkingsley@beckergroup.com

188 West Santa Clara Street
Ventura • California

\$ 1.25 NNN

- 4,400 sf Building with 14,000 sf Fenced Yard
- 16 Ft Ceilings + 10' x 11' Motorized Roll-Up Door
- Easy Access to 101 Frwy and Hwy 33
- Ideally suited for Courier Service/Armored Vehicle, building has been improved with a large walk-in safe



*Rare Industrial Building minutes from
Downtown Ventura and located directly
across from Patagonia's Headquarters*

Real Estate Investments | Property Management
Real Estate Investments | Property Management

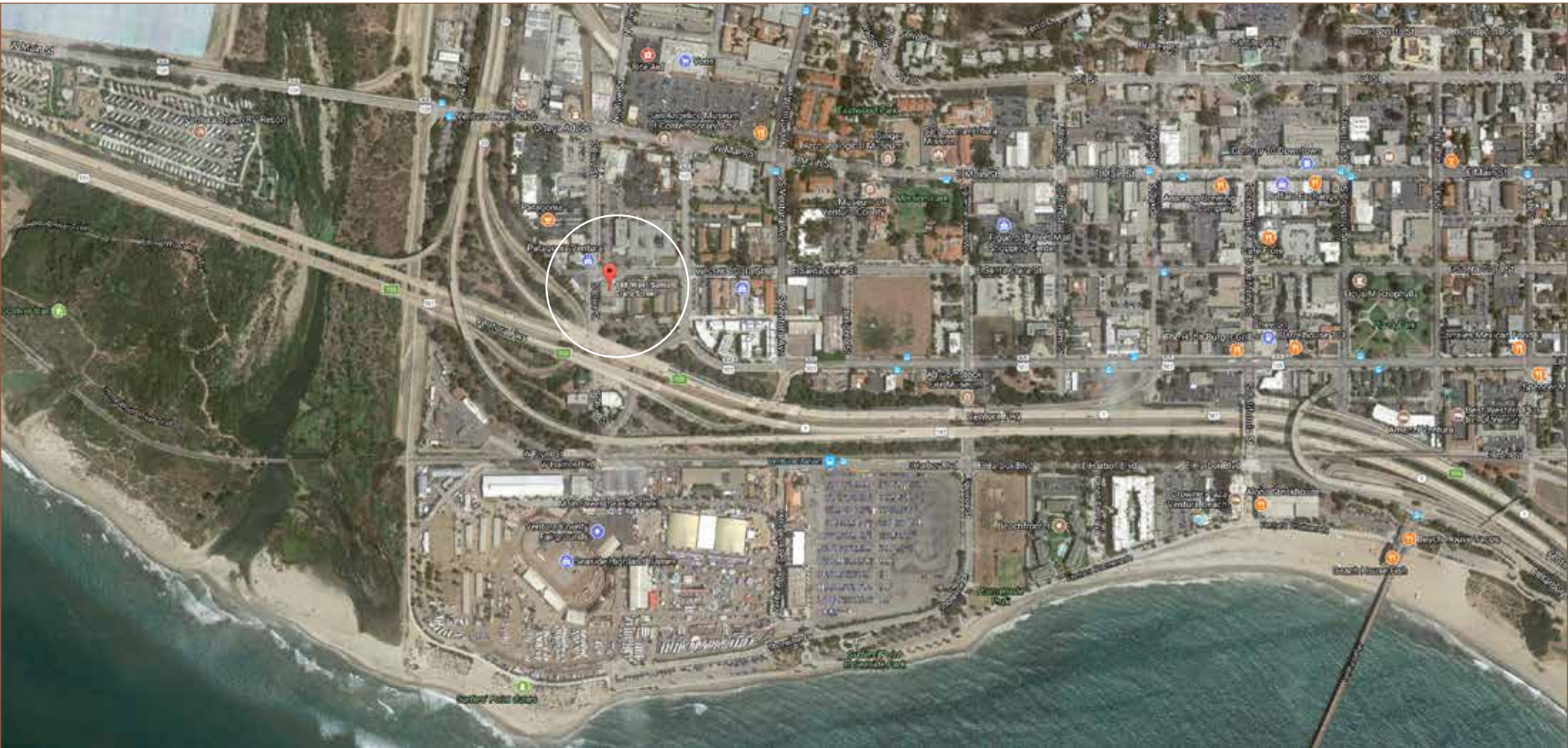
Office Address | 40 South Ash Street Ventura, CA 93001 Mailing Address | Post Office Box 23277, Ventura, CA 93002
Telephone | 805.653.6794 Facsimile | 805.653.6795 License | 01213236 Web | www.beckergroup.com

The information above has been obtained from sources believed reliable. While we do not doubt it's accuracy, we have not verified it and make no guarantee, warranty or representation about it. It is your responsibility to independently confirm it's accuracy and completeness. Any projections, opinions, assumption or estimates used are for example only and do not represent the current or future performance of the property. The value of this transaction to you depends on tax and other factors which should be evaluated by your tax, financial and legal advisors. You and your advisors should conduct a careful independent investigation of the property to determine to your satisfaction the stability of the property for your needs.



188 West Santa Clara Street

aerial map



Real Estate Investments | Property Management
Real Estate Investments | Property Management

Office Address | 40 South Ash Street Ventura, CA 93001

Mailing Address | Post Office Box 23277, Ventura, CA 93002

Telephone | 805.653.6794

Facsimile | 805.653.6795

License | 01213236

Web | www.beckergroup.com

The information above has been obtained from sources believed reliable. While we do not doubt it's accuracy, we have not verified it and make no guarantee, warranty or representation about it. It is your responsibility to independently confirm it's accuracy and completeness. Any projections, opinions, assumption or estimates used are for example only and do not represent the current or future performance of the property. The value of this transaction to you depends on tax and other factors which should be evaluated by your tax, financial and legal advisors. You and your advisors should conduct a careful independent investigation of the property to determine to your satisfaction the stability of the property for your needs.



188 West Santa Clara Street

interior images



Real Estate Investments | Property Management
Real Estate Investments | Property Management

Office Address | 40 South Ash Street Ventura, CA 93001 Mailing Address | Post Office Box 23277, Ventura, CA 93002
Telephone | 805.653.6794 Facsimile | 805.653.6795 License | 01213236 Web | www.beckergroup.com

The information above has been obtained from sources believed reliable. While we do not doubt its accuracy, we have not verified it and make no guarantee, warranty or representation about it. It is your responsibility to independently confirm its accuracy and completeness. Any projections, opinions, assumption or estimates used are for example only and do not represent the current or future performance of the property. The value of this transaction to you depends on tax and other factors which should be evaluated by your tax, financial and legal advisors. You and your advisors should conduct a careful independent investigation of the property to determine to your satisfaction the stability of the property for your needs.



188 West Santa Clara Street

interior images



Real Estate Investments | Property Management
Real Estate Investments | Property Management

Office Address | 40 South Ash Street Ventura, CA 93001 Mailing Address | Post Office Box 23277, Ventura, CA 93002
Telephone | 805.653.6794 Facsimile | 805.653.6795 License | 01213236 Web | www.beckergrp.com

The information above has been obtained from sources believed reliable. While we do not doubt it's accuracy, we have not verified it and make no guarantee, warranty or representation about it. It is your responsibility to independently confirm it's accuracy and completeness. Any projections, opinions, assumption or estimates used are for example only and do not represent the current or future performance of the property. The value of this transaction to you depends on tax and other factors which should be evaluated by your tax, financial and legal advisors. You and your advisors should conduct a careful independent investigation of the property to determine to your satisfaction the stability of the property for your needs.



188 West Santa Clara Street

interior images



Real Estate Investments | Property Management
Real Estate Investments | Property Management

Office Address | 40 South Ash Street Ventura, CA 93001 Mailing Address | Post Office Box 23277, Ventura, CA 93002
Telephone | 805.653.6794 Facsimile | 805.653.6795 License | 01213236 Web | www.beckergrp.com

The information above has been obtained from sources believed reliable. While we do not doubt its accuracy, we have not verified it and make no guarantee, warranty or representation about it. It is your responsibility to independently confirm its accuracy and completeness. Any projections, opinions, assumption or estimates used are for example only and do not represent the current or future performance of the property. The value of this transaction to you depends on tax and other factors which should be evaluated by your tax, financial and legal advisors. You and your advisors should conduct a careful independent investigation of the property to determine to your satisfaction the stability of the property for your needs.